

A Sony projector is mounted on the ceiling of a home cinema room, projecting a vibrant sunset scene onto a large screen. The room is dimly lit, featuring a large sofa, a coffee table, and a wall with vertical slats and recessed lighting. The projector is positioned in the upper right corner of the frame, casting a beam of light onto the screen. The screen displays a sunset over a body of water with a pier and a lighthouse. The Sony logo is visible in the top left corner of the screen.

SONY

CINEMA IS COMING HOME

Home Cinema Projector 2025

A night sky with the Milky Way galaxy over a sunset over a body of water. The sky is filled with stars, and the Milky Way is visible as a bright, colorful band of light. The sunset is a mix of orange and yellow, and the water is dark. The text is centered in the middle of the image.

**Sony introduces  
"Pro Cinematic HDR" experience**

The ultimate cinema experience comes home



Color : Black/White



## BRAVIA Projector 9

VPL-XW8100ES

Laser with ACF-Lens | 4K HDR | 3,400 lm

See every movie in a new light with the ultimate home cinema experience powered by our XR Processor for projector. Enjoy precision and clarity with rich gradation, deep blacks, and brilliant colors, enhanced by our class-leading laser light source.

Bring the authentic big screen home



Color : Black/White



## BRAVIA Projector 8

VPL-XW6100ES

Laser with ACF-Lens | 4K HDR | 2,700 lm

Bring every movie to life at home on the big screen powered by our XR Processor for projector and our class-leading laser light source. Enjoy precision and clarity with rich gradation, deep blacks, and brilliant colors.

Upgrade to unmatched immersion



Color : Black/White



Bring home entertainment with a native 4K, high-value laser projector



Color : Black/White



## BRAVIA Projector 7

VPL-XW5100ES

Laser | 4K HDR | 2,200 lm

Upgrade home entertainment and experience the breathtaking clarity of native 4K resolution with our flagship projector processor XR.

## VPL-XW5000ES

Laser | 4K HDR | 2,000 lm

Bring the action home with up to 2,000 lumens of brightness, generated by a long-lasting laser light source, for vibrant images even on a large screen.

The ultimate home theater experience



## VPL-GTZ380

Laser with ARC-F Lens\* | 4K HDR | 10,000 lm

The Sony VPL-GTZ380 is the world's most advanced projector designed for large home cinemas to bring a true theater experience home. An exceptional 10,000 lumens of brightness with 100% DCI-P3 wide color gamut is perfect for the largest and most lavishly equipped home cinema rooms.

\*The ARC-F lens is optional.

## Sony Home Cinema Projector Lineup

### 4K HDR LASER PHOSPHOR PROJECTOR

		<b>2024 model</b>  Color : Black/White	<b>2024 model</b>  Color : Black/White	<b>2025 model</b>  Color : Black/White	 Color : Black/White
<b>Model</b>	VPL-GTZ380	<b>BRAVIA Projector 9</b> VPL-XW8100ES	<b>BRAVIA Projector 8</b> VPL-XW6100ES	<b>BRAVIA Projector 7</b> VPL-XW5100ES	VPL-XW5000ES
<b>Brightness</b>	10,000 lm	3,400lm	2,700 lm	2,200 lm	2,000 lm
<b>Picture Engine</b>	X1 Ultimate for projector	XR Processor for projector	XR Processor for projector	XR Processor for projector	X1 Ultimate for projector
<b>Light Source Enhancer</b>	Laser	Laser	Laser	Laser	Laser
<b>Resolution</b>	Native 4K	Native 4K	Native 4K	Native 4K	Native 4K
<b>Lens (Bundled)</b>	-	ACF-Lens	ACF-Lens	Standard 4K Lens	Standard 4K Lens
<b>Dynamic Contrast</b>	∞:1	∞:1	∞:1	∞:1	∞:1
<b>Color space</b>	100% DCI-P3 Triluminos Pro	95% DCI-P3 XR Triluminos Pro	95% DCI-P3 XR Triluminos Pro	95% DCI-P3 XR Triluminos Pro	95% DCI-P3 Triluminos Pro
<b>Screen Adjustment</b>	Picture Position	Picture Position + Keystone	Picture Position + Keystone	Aspect Ratio Scaling + Keystone	-
<b>Features specified in HDMI2.1</b>	-	4K120/ALLM	4K120/ALLM	4K120/ALLM	-
<b>Accessories Lens (Optional)</b>	VPLL-Z8014 (Standard ARC-F) VPLL-Z8008 (Short throw)	-	-	-	-

# Picture Quality

Sony's advanced processing delivers an unrivalled HDR cinema experience.



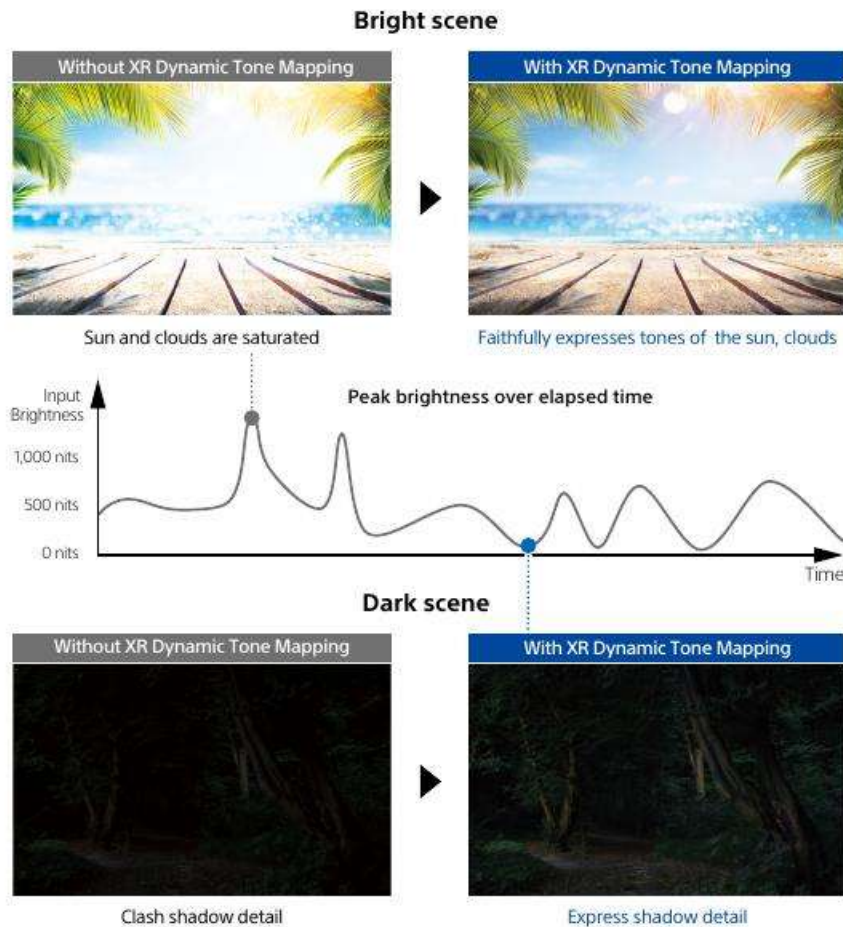
Bring every movie to new life with the ultimate home cinema experience powered by our XR Processor for projector and our class-leading laser light source. Enjoy precision and clarity with rich gradation, deep blacks, and brilliant colors.

# XR Processor for Projector

## XR Dynamic Tone Mapping

XR Dynamic Tone Mapping optimizes brightness frame by frame, ensuring perfect gradation and contrast while keeping creator's intent.

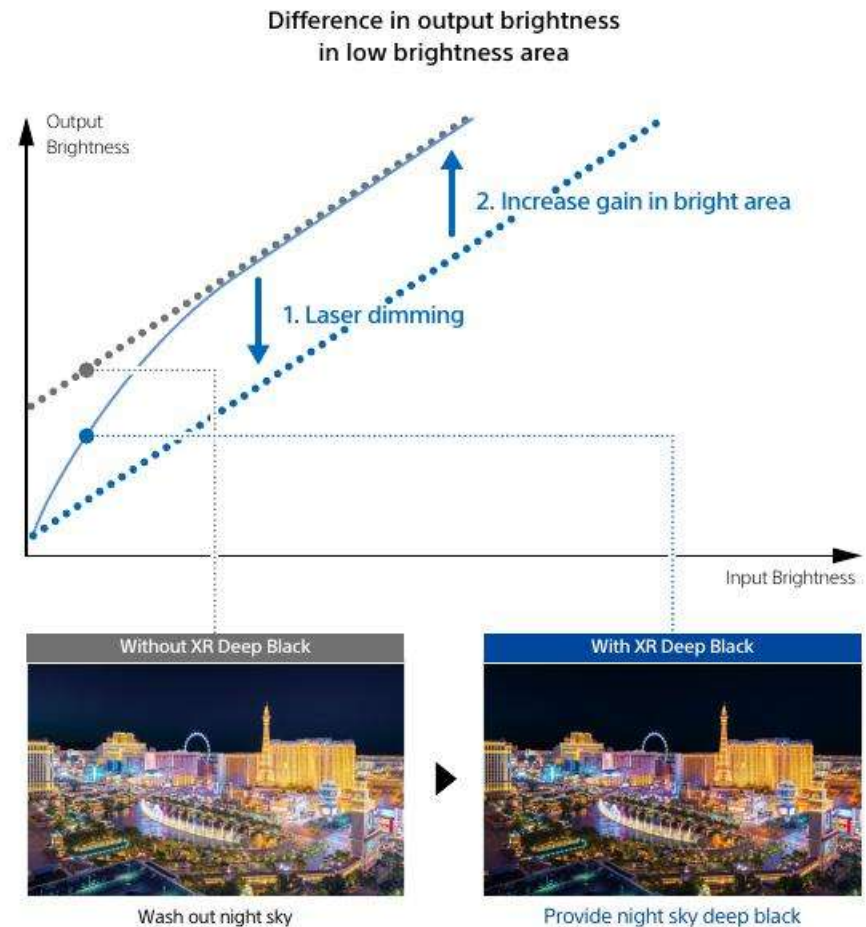
\*BRAVIA Projector 9 / BRAVIA Projector 8 / BRAVIA Projector 7 only



## XR Deep Black

XR Deep Black technology enhances dark scenes with deeper blacks and precise color expression by controlling laser dimming in dark scenes and optimizing highlight processing.

\*BRAVIA Projector 9 / BRAVIA Projector 8 / BRAVIA Projector 7 only



## XR Triluminos Pro

XR Triluminos Pro brings over a billion colors to life.

\*BRAVIA Projector 9 / BRAVIA Projector 8 / BRAVIA Projector 7 only

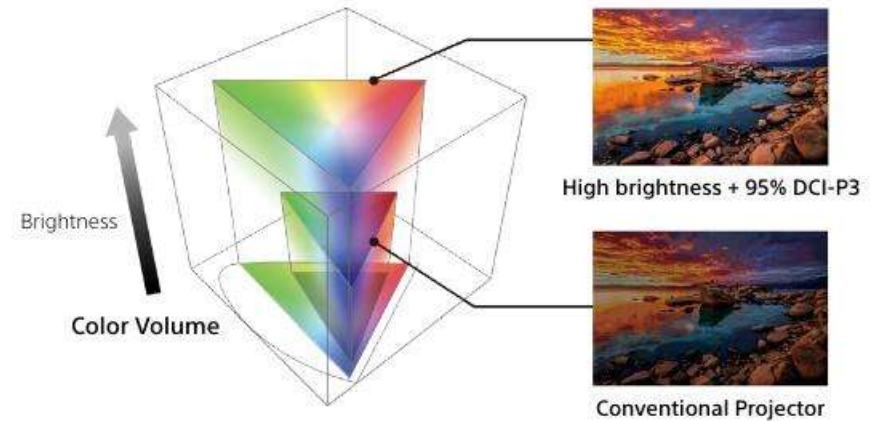


Without XR Triluminos Pro

With XR Triluminos Pro

## Wide color gamut and High brightness

This combined with high brightness and expanded color volume delivers outstanding color expression.



## XR Clear Image

XR Clear Image analyzes individual object frame-by-frame and expresses textures close to reality down to the finest detail while minimizing noise.

\*BRAVIA Projector 9 / BRAVIA Projector 8 / BRAVIA Projector 7 only

### Best Clarity for individual objects

Focus on the finest details. XR technology hones in on individual details, bringing unparalleled sharpness and precision to every scene.

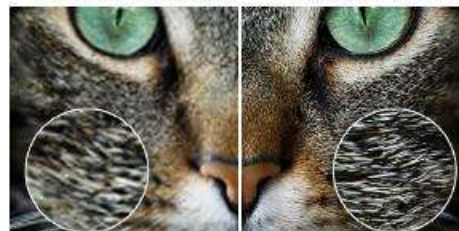
Without XR Clear image    With XR Clear image



### Everything upscaled to 4K quality

See everything in crisp 4K quality. XR upscaling technology smartly recreates lost textures and details, transforming every frame to restore the director's vision.

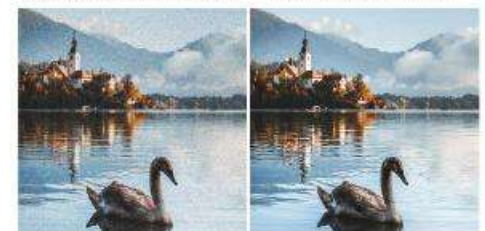
Without XR Clear image    With XR Clear image



### Beautiful images without noise

Uncompromised clarity. XR's noise reduction technology ensures smooth, distraction-free visuals.

Without XR Clear image    With XR Clear image



# Background technologies to achieve value

XR Processor for projector optimizes our acclaimed BRAVIA TV video processing for projection.

## Cross-Analyzes

Rather than processing various elements such as color, definition, and contrast individually, it analyzes them cross-sectionally to provide more natural-looking images without artificial impressions.

\*BRAVIA Projector 9 / BRAVIA Projector 8 / BRAVIA Projector 7 only



## Depth Mapping

It utilizes Human Cognitive technology to enhance depth and texture for immersive experiences. Foreground depth is enhanced and the background adjusted so the entire image looks more real and natural.

\*BRAVIA Projector 9 / BRAVIA Projector 8 / BRAVIA Projector 7 only



## Focal Points recognition

The focal point is where you tend to focus in a picture, where your eyes are naturally drawn to within the scene. It recognizes that focal point and enhances that part of the image.

\*BRAVIA Projector 9 / BRAVIA Projector 8 / BRAVIA Projector 7 only



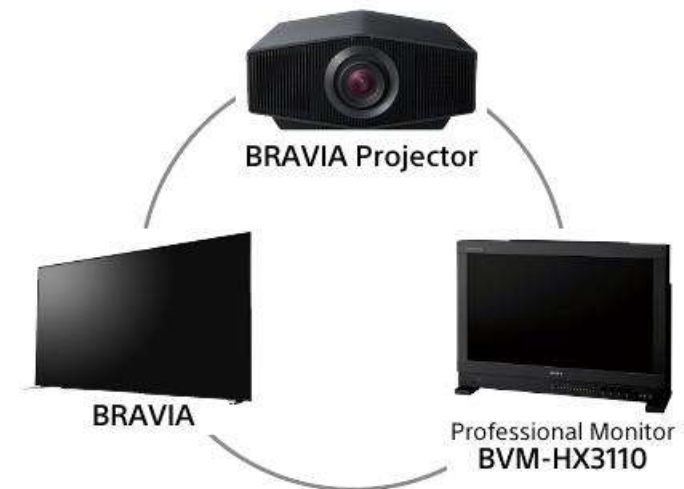
## Creator's intent

Sony home cinema projectors also perform consistent picture quality adjustment and signal processing to reproduce the gradation and color which creator's intent.

This is achieved by designing and adjusting the basic picture quality parameters of the projector with the same targets as the industry-standard BVM-HX3110's White Balance/Gamma/Color.

Additionally, our projectors use the XR processor\* of the same generation as the current BRAVIA high-end models.

\*BRAVIA Projector 9 / BRAVIA Projector 8 / BRAVIA Projector 7 only





# Installation Flexibility

Effortless installation.

Endless possibilities.

With effortless installation, Sony projectors open up endless possibilities. The compact, lightweight design allows for versatile setup in any space.

## Compact and lightweight

Say goodbye to heavy lifting. Weighing in at 14kg and 13kg, our projectors pack a punch without the bulk.



**BRAVIA Projector 9 / BRAVIA Projector 8**



**VPL-XW5000ES**

## Flexible installation, consistent clarity

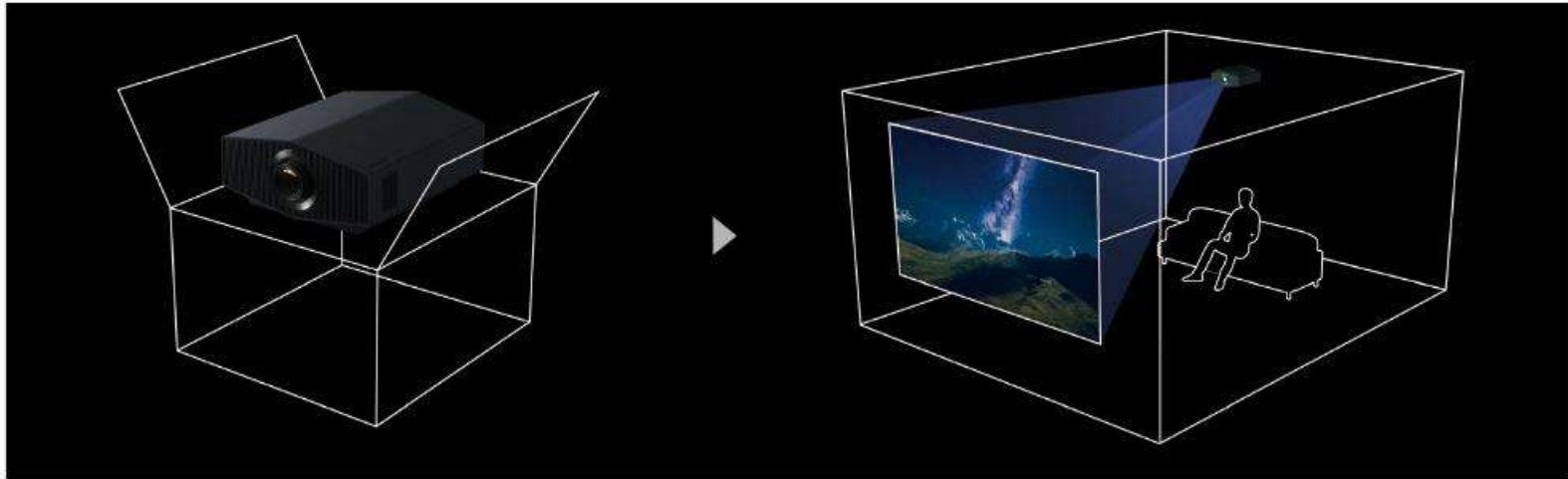
Effortlessly adjust your image for geometry, ensuring seamless projection at any ceiling or stand height by using with the lens shift function and corner keystone correction in combination. With XR Clear Image, content can be projected while maintaining as much clarity as possible.

\*BRAVIA Projector 9 / BRAVIA Projector 8 / BRAVIA Projector 7 only



## Default picture setting ideal for cinema

Stunning visuals right out of the box. Sony Home Cinema Projectors are pre-configured for cinematic color and gamma, with extensive adjustment and calibration options available if needed.

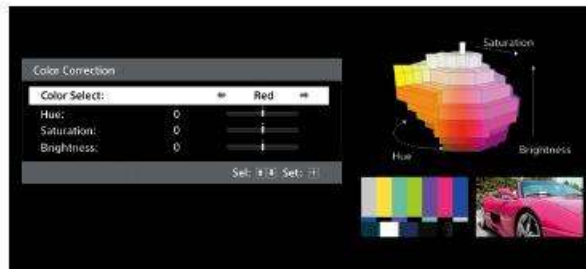


## Precision controls for perfect viewing

Explore countless ways to enhance your home cinema experience with customisable settings for color correction, color space, and gamma correction to display images just the way you like them.

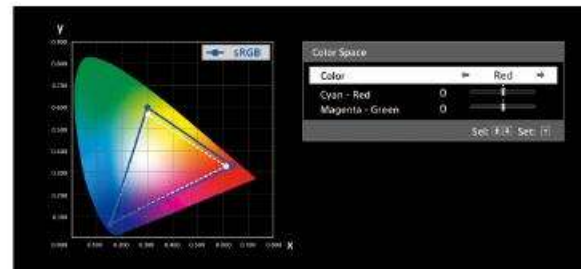
### Color correction

Precise color correction technology enhances the accuracy of every hue, creating lifelike images with rich tones.



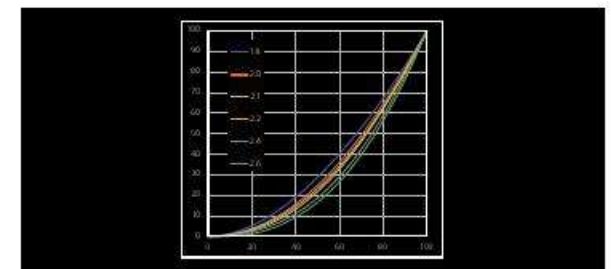
### Color space

With a huge 95% DCI-P3 color gamut, and custom color space tuning, all your visuals are more immersive and realistic.



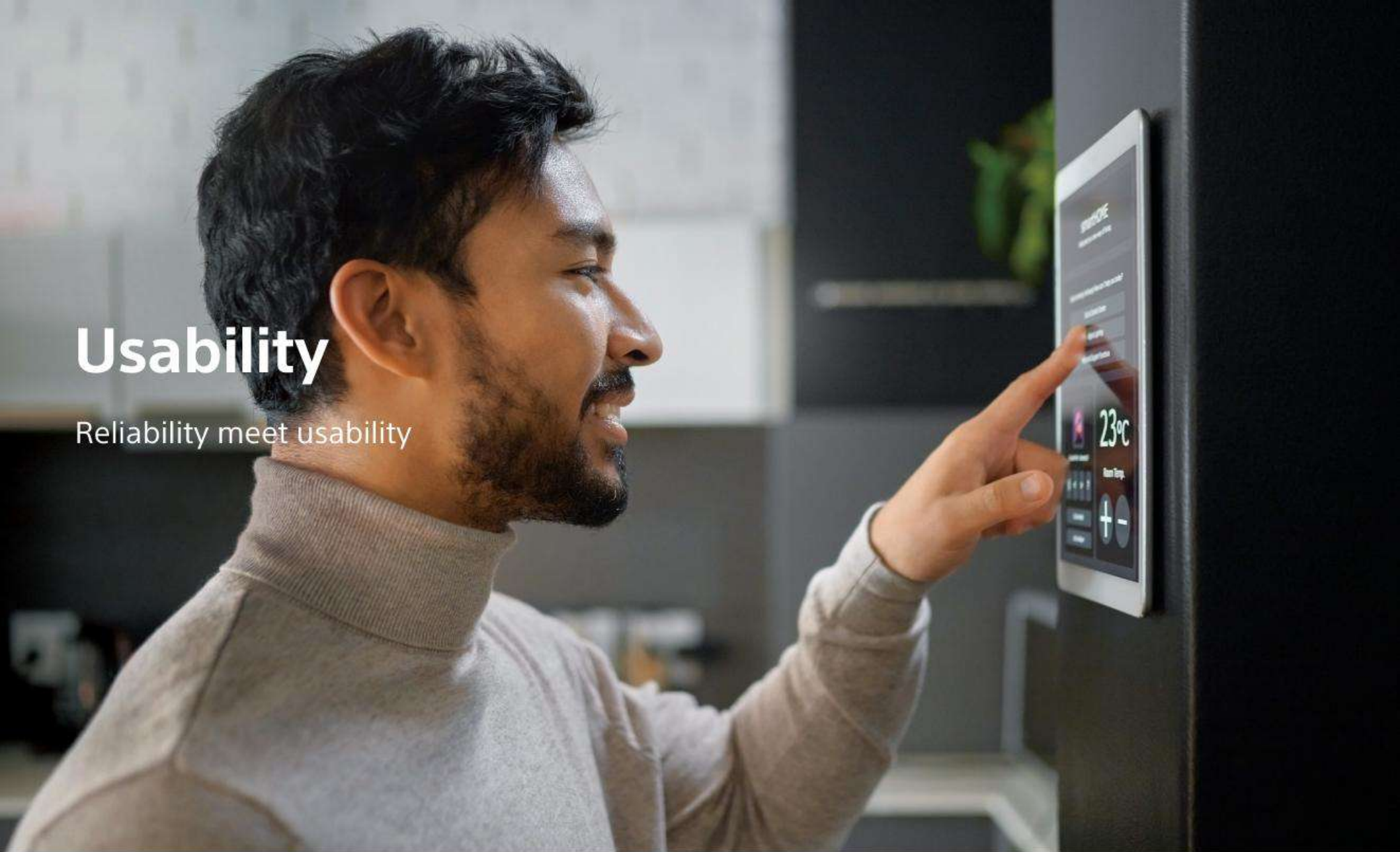
### Gamma correction

It configures the response characteristics of gradation of the corrected image.



# Usability

Reliability meet usability



Built for reliability and designed for usability, our projectors integrate seamlessly with industry protocols and major solutions.

# Reliable operation with standard industry protocols as well as major solution partners

## Home Automation Systems

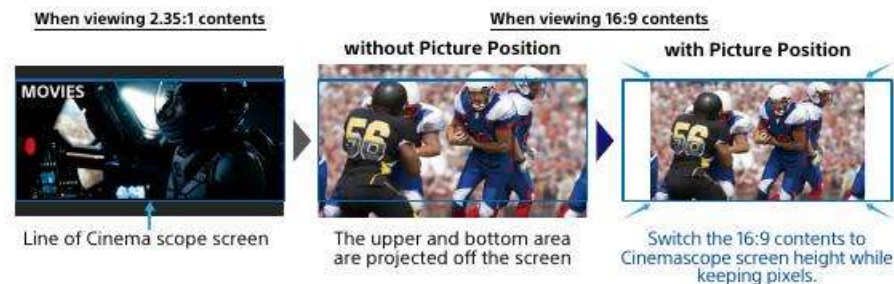
One remote to manage it all. Easily integrate your projector with top home automation systems like Control4, Crestron, Savant, AMX.



## Picture Position Memory

Easily switch between cinema aspect ratios and TV aspect ratios with the push of a button. Ideal for Cinemascope screens with 5 programmable presets to support a wider range of content aspect ratios.

\*GTZ380 / BRAVIA Projector 9 / BRAVIA Projector 8 only



## Remote diagnostics

Ideal for advanced custom installations, Sony home cinema projectors support remote monitoring and diagnostics of network settings, status, and even temperature.



## Aspect Ratio Scaling

Easily scale 16:9 content to match the height of a Cinemascope screen digitally without needing to adjust the lens.

\*BRAVIA Projector 7 only



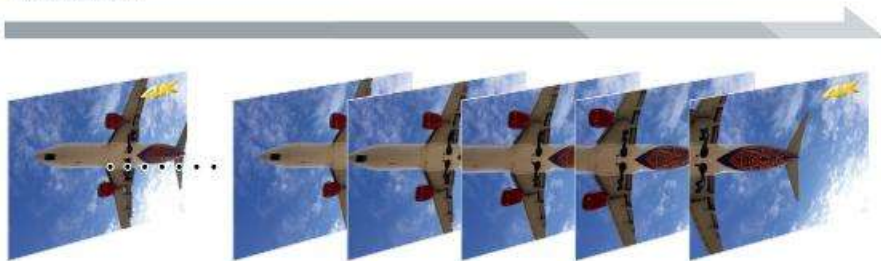
# With 4K/120fps and ALLM (Auto Low Latency Mode) by HDMI2.1, it gives smooth and clear movement for responsive gameplay.

## 4K/120 fps\*1

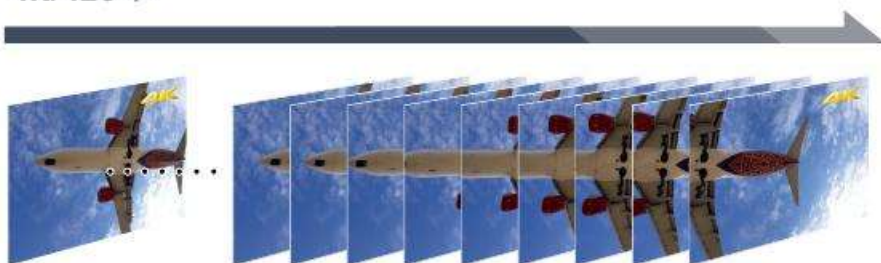
Experience lightning-fast, smooth visuals in 4K at 120 frames per second. Perfect for action-packed gaming.

\*BRAVIA Projector 9 / BRAVIA Projector 8 / BRAVIA Projector 7 only

## 4K/60 fps



## 4K/120 fps



\*1: 4K/120fps compatible games

## Auto Low Latency Mode\*2

Always game-ready. Automatically switch to game mode with Auto Low Latency Mode, ensuring responsive play and minimal lag.

\*BRAVIA Projector 9 / BRAVIA Projector 8 / BRAVIA Projector 7 only



Auto Low Latency Mode: **OFF**

Auto Low Latency Mode: **ON**

BRAVIA Projector 9 / BRAVIA Projector 8 / BRAVIA Projector 7

Input lag reduction

21 msec for 4K/60 fps signal

12 msec for 4K/120 fps signal

\*2: The Projector automatically switches Input Lag Reduction mode to on based on the ALLM information from the HDMI-connected device. In this mode, Motionflow and NR cannot be used.



# Sustainability

Better tech. Better planet

Better tech helps maintain a better planet.

Our projectors are designed with sustainability in mind, featuring mercury-free components and enhanced power efficiency.

# Environmentally friendly design

Better tech helps maintain a better planet. Our projectors are designed with sustainability in mind, featuring mercury-free components and enhanced power efficiency.

## Power efficiency

Maximize energy efficiency without compromising on picture quality, with XR Deep Black's advanced laser control technology. Save on power, not on quality.

\*BRAVIA Projector 9 / BRAVIA Projector 8 / BRAVIA Projector 7 only

Conventional model **Power consumption in the dark scene** With XR Deep Black



Power consumption in the dark scene



Power consumption in the dark scene

## Mercury-free

Safer and greener. Our projectors use mercury-free laser light sources, designed to be safer for the environment and your home.

### Mercury usage



**0%**

All our projectors use mercury-free laser light sources.

## Live Color Enhancer

The Live Color Enhancer selectively expands the color gamut, for vivid HDR images without unnatural oversaturation. Whether you're watching in daylight or a dark room, you can count on vibrant, true-to-life colors.

\*BRAVIA Projector 9 only



Live Color Enhancer: **OFF**  
Washout color



Live Color Enhancer: **ON**  
Reproduce color

## Anamorphic lens compatibility for 4K signals (V-stretch for 4K)

Wide lens compatibility means you can use your legacy anamorphic lenses with ease, even with 4K content. Watch your content in your favorite formats with a full-size picture, thanks to the V-stretch function.

## 4K Motionflow

The powerful video processor in the projector offers Motionflow for smooth and clear motion, even when viewing 4K content. Motionflow is ideal for fast-moving sports content, as it adds frames to reduce blur while maintaining brightness.

Cinema purists can choose True Theatre mode to retain the original 24 fps.



Motionflow: **OFF**



Motionflow: **ON**

## Make the home cinema experience bigger and better than ever

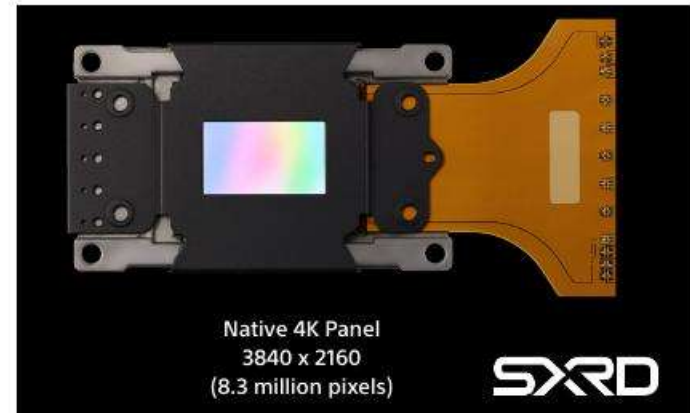
Sony 4K projectors are compatible with IMAX Enhanced content, making them ready to deliver the bigger, more breathtaking IMAX visuals you love in compatible content. Take advantage of the size of your projector screen with movies that become even more immersive with IMAX Enhanced.



**IMAX**  
ENHANCED

## Native 4K SXRDTM panel.

Immerse yourself in an incredibly lifelike picture with native 4K that offers 8.3 million pixels (3,840 x 2,160). With an 0.61-inch SXRDTM panel, you'll enjoy high brightness, inky blacks, vibrant colors, rich tones and textures, plus clear cinematic motion and image smoothness.

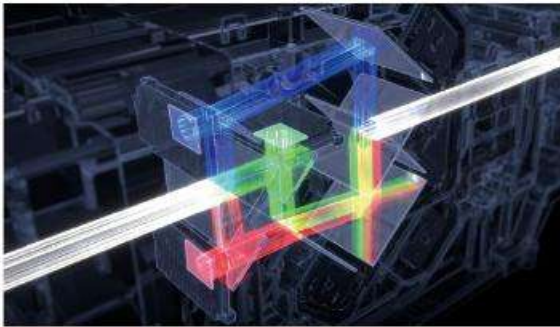


\*\*GTZ380 (4096x2160) with 0.74-inch SXRDTM panel

## Wide Dynamic Range Optics

Our Wide Dynamic Range Optics contribute to a compact design with better light control by maximising the potential of the laser light source.

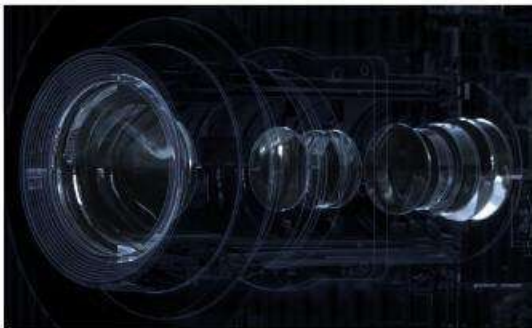
The resulting higher color volume means naturally colorful images, even at high brightness levels, and stunning, immersive contrast.



## Advanced crisp focused lens

Experience flawless clarity across the entire screen, thanks to our Advanced Crisp-Focused Lens. The 70-mm aspherical front lens widens the focus area, ensuring clear images from corner to corner. A floating focus system utilises two moving lens groups and extra-low dispersion glass for distortion-free images with accurate color reproduction.

\*BRAVIA Projector 9 / BRAVIA Projector 8 only

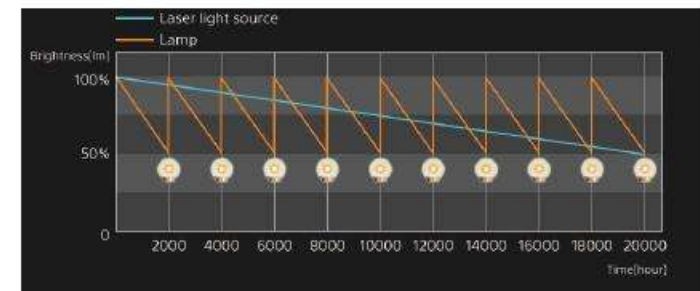


## Enduring brightness from a laser light source

You'll never have to worry about changing the lamp in your home cinema projector—no lamp replacement and virtually no maintenance are required.

The projector uses a pure and reliable laser light source, keeping optimal brightness for up to 20,000 uninterrupted hours.\*

\*Estimated time and it varies depending on environment and usage.



## Motorized zoom lens and wide lens shift

Installing your 4K laser projector in any room is easy with a motorized zoom and a wide lens shift range. Adjust the image position vertically and horizontally for the perfect setup whatever your room size.

\*GTZ380 / BRAVIA Projector 9 / BRAVIA Projector 8 only

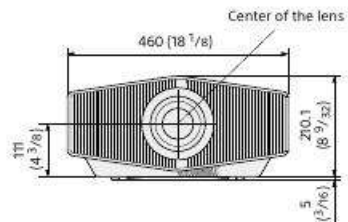
## BRAVIA Projector 9

VPL-XW8100ES

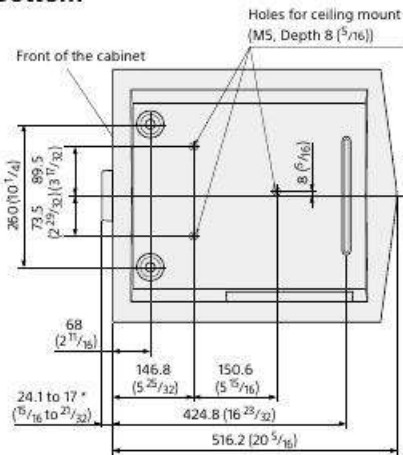
### CONNECTOR PANELS



### Front



### Bottom



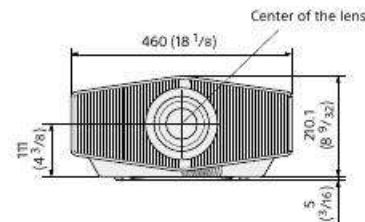
## BRAVIA Projector 8

VPL-XW6100ES

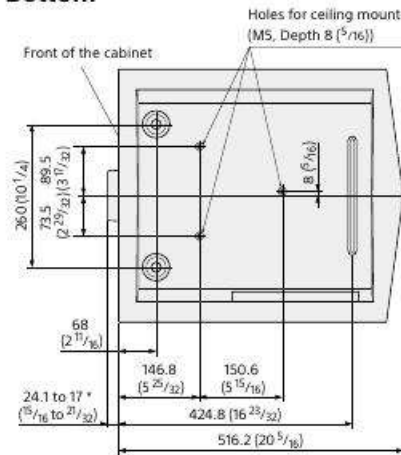
### CONNECTOR PANELS



### Front



### Bottom



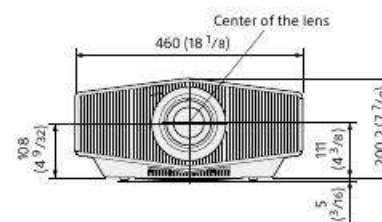
## BRAVIA Projector 7

VPL-XW5100ES  
VPL-XW5000ES

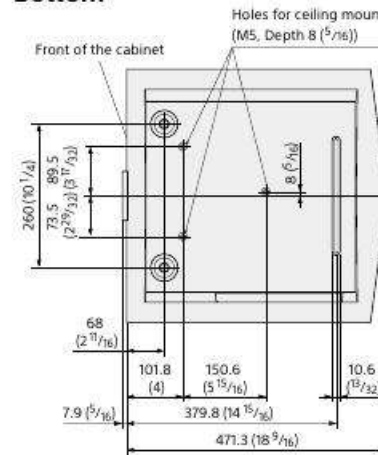
### CONNECTOR PANELS



### Front



### Bottom

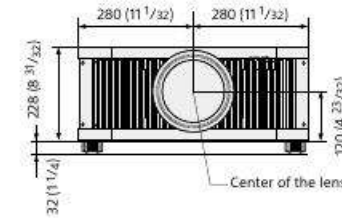


## VPL-GTZ380

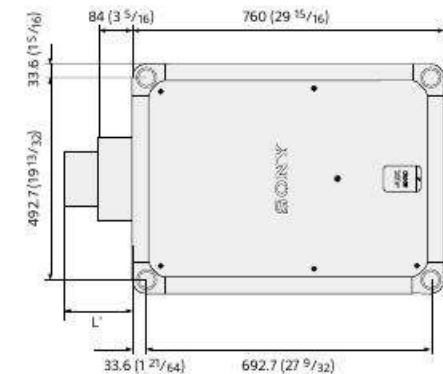
### CONNECTOR PANELS



### Front



### Bottom



\*VPL-GTZ380  
VPLL-Z8014 (Optional) : L= 173 (6 13/16)  
VPLL-Z8008 (Optional) : L= Wide 184 (7 1/4) / Tele 175 (6 7/8)

\*BRAVIA Projector 9 / BRAVIA Projector 8 only  
Varies depending on how focus is adjusted.

Unit : mm (inches)

	BRAVIA Projector 9 VPL-XW8100ES	BRAVIA Projector 8 VPL-XW6100ES	BRAVIA Projector 7 VPL-XW5100ES	VPL-XW5000ES	VPL-GTZ380	
Display system	4K SXRD panel, projection system	4K SXRD panel, projection system	4K SXRD panel, projection system	4K SXRD panel, projection system	4K SXRD panel, projection system	
Display device	Size of effective display area	0.61" x 3	0.61" x 3	0.61" x 3	0.74" x 3	
	Number of pixels	24,883,200 (3840 x 2160 x 3) pixels	24,883,200 (3840 x 2160 x 3) pixels	24,883,200 (3840 x 2160 x 3) pixels	24,883,200 (3840 x 2160 x 3) pixels	26,542,080 (4096 x 2160 x 3) pixels
Light output	Light source	Laser diode	Laser diode	Laser diode	Laser diode	
	Light source	Laser diode	Laser diode	Laser diode	Laser diode	
Dynamic contrast	∞ : 1	∞ : 1	∞ : 1	∞ : 1	∞ : 1	
Projection lens	Focus	Powered	Powered	Manual	Powered	
	Zoom	Powered (Approx. x 2.1)	Powered (Approx. x 2.1)	Manual (Approx. x 1.60)	Powered	
	Lens shift	Powered, Vertical +/- 85 %, Horizontal +/- 36 %	Powered, Vertical +/- 85 %, Horizontal +/- 36 %	Manual, Vertical +/- 71 %, Horizontal +/- 25 %	Manual (Approx. x 1.60)	VPLL-Z8014 (Optional) : Powered, Vertical: +/- 80 %, Horizontal: +/- 33 %
		-	-	-	-	VPLL-Z8008 (Optional) : Powered, Vertical: +/- 50 %, Horizontal: +/- 19 %
	Throw ratio <sup>1)</sup>	1.35:1 to 2.84:1	1.35:1 to 2.84:1	1.38:1 to 2.21:1	1.38:1 to 2.21:1	VPLL-Z8014 (Optional) : 1.49 : 1 to 2.91 : 1
		-	-	-	-	VPLL-Z8008 (Optional) : 0.85 : 1 to 1.09 : 1
Picture position memory	5	5	-	-	5	
Picture processor	XR Processor for projector	XR Processor for projector	XR Processor for projector	X1 Ultimate for projector	X1 Ultimate for projector	
	Contrast	XR Dynamic Tone Mapping XR Deep Black	XR Dynamic Tone Mapping XR Deep Black	XR Dynamic Tone Mapping XR Deep Black	Object-based HDR remaster Dynamic HDR Enhancer	Object-based HDR remaster Dynamic HDR Enhancer Digital Contrast Optimizer
	Color	XR Triluminos Pro Live Color Enhancer	XR Triluminos Pro	XR Triluminos Pro	Triluminos Pro	Triluminos Pro
	Clarity	XR Clear Image	XR Clear Image	XR Clear Image	Object-based Super Resolution Dual Database Processing Digital Focus Optimizer	Object-based Super Resolution Dual Database Processing Digital Focus Optimizer
	Motion	Motionflow	Motionflow	Motionflow	Motionflow	Motionflow
	Accepted HDR format	HDR10/HLG	HDR10/HLG	HDR10/HLG	HDR10/HLG	HDR10/HLG
Accepted digital signals	720x576/50p, 720x480/60p, 1280x720/50p, 1280x720/60p, 1920x1080/50i, 1920x1080/60i, 1920x1080/24p, 1920x1080/48p, 1920x1080/50p, 1920x1080/60p, 1920x1080/100p, 1920x1080/120p, 3840x2160/24p, 3840x2160/25p, 3840x2160/30p, 3840x2160/48p, 3840x2160/50p, 3840x2160/60p, 3840x2160/100p, 3840x2160/120p, 4096x2160/24p, 4096x2160/25p, 4096x2160/30p, 4096x2160/48p, 4096x2160/50p, 4096x2160/60p, 4096x2160/100p, 4096x2160/120p	720x576/50p, 720x480/60p, 1280x720/50p, 1280x720/60p, 1920x1080/50i, 1920x1080/60i, 1920x1080/24p, 1920x1080/48p, 1920x1080/50p, 1920x1080/60p, 1920x1080/100p, 1920x1080/120p, 3840x2160/24p, 3840x2160/25p, 3840x2160/30p, 3840x2160/48p, 3840x2160/50p, 3840x2160/60p, 3840x2160/100p, 3840x2160/120p, 4096x2160/24p, 4096x2160/25p, 4096x2160/30p, 4096x2160/48p, 4096x2160/50p, 4096x2160/60p, 4096x2160/100p, 4096x2160/120p	720x576/50p, 720x480/60p, 1280x720/50p, 1280x720/60p, 1920x1080/50i, 1920x1080/60i, 1920x1080/24p, 1920x1080/48p, 1920x1080/50p, 1920x1080/60p, 1920x1080/100p, 1920x1080/120p, 3840x2160/24p, 3840x2160/25p, 3840x2160/30p, 3840x2160/48p, 3840x2160/50p, 3840x2160/60p, 3840x2160/100p, 3840x2160/120p, 4096x2160/24p, 4096x2160/25p, 4096x2160/30p, 4096x2160/48p, 4096x2160/50p, 4096x2160/60p, 4096x2160/100p, 4096x2160/120p	720 x 576/50p, 720 x 480/60p, 1280 x 720/50p, 1280 x 720/60p, 1920 x 1080/50i, 1920 x 1080/60i, 1920 x 1080/24p, 1920 x 1080/50p, 1920 x 1080/60p, 1920 x 1080/100p, 1920 x 1080/120p, 3840 x 2160/24p, 3840 x 2160/25p, 3840 x 2160/30p, 3840 x 2160/48p, 3840 x 2160/50p, 3840 x 2160/60p, 3840 x 2160/100p, 3840 x 2160/120p, 4096 x 2160/24p, 4096 x 2160/25p, 4096 x 2160/30p, 4096 x 2160/48p, 4096 x 2160/50p, 4096 x 2160/60p, 4096 x 2160/100p, 4096 x 2160/120p	720 x 576/50p, 720 x 480/60p, 1280 x 720/50p, 1280 x 720/60p, 1920 x 1080/50i, 1920 x 1080/60i, 1920 x 1080/24p, 1920 x 1080/50p, 1920 x 1080/60p, 1920 x 1080/100p, 1920 x 1080/120p, 3840 x 2160/24p, 3840 x 2160/25p, 3840 x 2160/30p, 3840 x 2160/48p, 3840 x 2160/50p, 3840 x 2160/60p, 3840 x 2160/100p, 3840 x 2160/120p, 4096 x 2160/24p, 4096 x 2160/25p, 4096 x 2160/30p, 4096 x 2160/48p, 4096 x 2160/50p, 4096 x 2160/60p, 4096 x 2160/100p, 4096 x 2160/120p	
	3D	-	-	-	-	Yes
Aspect Ratio Scaling	-	-	Yes	-	-	
Input Output (Computer / Video / Control)	HDMI	x 2 (HDCP2.3)	x 2 (HDCP2.3)	x 2 (HDCP2.3)	x 2 (HDCP2.3)	
	Features specified in HDMI2.1	4K120/ALLM	4K120/ALLM	-	-	
	Display Port	-	-	-	-	x 2 (HDCP2.3)
	Trigger	x 1 (Mini jack, DC 12 V, Max. 100 mA)	x 1 (Mini jack, DC 12 V, Max. 100 mA)	x 1 (Mini jack, DC 12 V, Max. 100 mA)	x 1 (Mini jack, DC 12 V, Max. 100 mA)	x 2 (Mini jack, DC 12 V, Max. 100 mA)
	RS-232C	x 1 (D-sub 9-pin (male))	x 1 (D-sub 9-pin (male))	x 1 (D-sub 9-pin (male))	x 1 (D-sub 9-pin (male))	x 1 (D-sub 9-pin (male))
	LAN	x 1 (RJ-45, 10BASE-T/100BASE-TX)	x 1 (RJ-45, 10BASE-T/100BASE-TX)	x 1 (RJ-45, 10BASE-T/100BASE-TX)	x 1 (RJ-45, 10BASE-T/100BASE-TX)	x 1 (RJ-45, 10BASE-T/100BASE-TX)
	IR IN / OUT	IN: x 1 (Mini jack)	IN: x 1 (Mini jack)	IN: x 1 (Mini jack)	IN: x 1 (Mini jack)	IN: x 1, Out: x 1 (Mini jack)
	3D SYNC OUT	-	-	-	-	x 1 (3-pin mini-DIN (VESA 3D))
USB (for Firmware update)	x 1 (Type A, DC 5 V, Max. 500 mA)	x 1 (Type A, DC 5 V, Max. 500 mA)	x 1 (Type A, DC 5 V, Max. 500 mA)	x 1 (Type A, DC 5 V, Max. 500 mA)	x 1 (Type A, DC 5 V, Max. 500 mA)	
Acoustic noise <sup>2)</sup>	26 dB	26 dB	24 dB	24 dB	33-39 dB	
Power requirements	AC 100-240 V, 50/60 Hz	AC 100-240 V, 50/60 Hz	AC 100-240 V, 50/60 Hz	AC 100-240 V, 50/60 Hz	AC 200-240 V, 50/60 Hz, AC 100-120 V, 50/60 Hz (Brightness is dimmed.)	
Power consumption	Standby	420 W	380 W	295 W	295 W	Max. 2.0 kW (TBD)
	Networked Standby	0.4 W (when "Remote Start" is set to "Off") 0.5 W (LAN) (when "Remote Start" is set to "On") When a LAN terminal is not connected, it becomes a low power consumption mode (0.4 W)	0.4 W (when "Remote Start" is set to "Off") 0.5 W (LAN) (when "Remote Start" is set to "On") When a LAN terminal is not connected, it becomes a low power consumption mode (0.4 W)	0.4 W (when "Remote Start" is set to "Off") 0.5 W (LAN) (when "Remote Start" is set to "On") When a LAN terminal is not connected, it becomes a low power consumption mode (0.4 W)	0.4 W (when "Remote Start" is set to "Off") 0.5 W (LAN) (when "Remote Start" is set to "On") When a LAN terminal is not connected, it becomes a low power consumption mode (0.4 W)	0.4 W (when "Remote Start" is set to "Off") 1.0 W (LAN) (when "Remote Start" is set to "On")
Dimensions (Without Protrusions)	W 460 x H 210 x D 517 mm (W 18 1/8 x H 8 9/32 x D 20 11/32 in)	W 460 x H 210 x D 517 mm (W 18 1/8 x H 8 9/32 x D 20 11/32 in)	W 460 x H 200 x D 472 mm (W 18 1/8 x H 7 7/8 x D 18 19/32 in)	W 460 x H 200 x D 472 mm (W 18 1/8 x H 7 7/8 x D 18 19/32 in)	W 560 x H 228 x D 760 mm (W 22 1/16 x H 8 31/32 x D 29 15/16 in)	
Mass	Approx. 14 kg / 31 lb	Approx. 14 kg / 31 lb	Approx. 13 kg / 28 lb	Approx. 13 kg / 28 lb	Approx. 51 kg / 112 lb.	
Supplied accessories	Remote Control (RM-PJ24), Size AA (R6/LR6) batteries (2), AC Power Cord (1), Lens Cap (1), Setup Guide (1)	Remote Control (RM-PJ24), Size AA (R6/LR6) batteries (2), AC Power Cord (1), Lens Cap (1), Setup Guide (1)	Remote Control (RM-PJ28), Size AA (R6/LR6) batteries (2), AC Power Cord (1), Lens Cap (1), Setup Guide (1)	Remote Control (RM-PJ28), Size AA (R6/LR6) batteries (2), AC Power Cord (1), Lens Cap (1), Setup Guide (1)	RM-PJ29 Remote Commander (1), Size AA (R6/LR6) batteries (2), AC power Cord (1), Lens Cap (1), Plug holder (1), Safety Regulations (1)	
Optional accessories	-	-	-	-	VPLL-Z8014 (Normal throw lens) VPLL-Z8008 (Short throw lens)	

<sup>1)</sup> Display size : 16:9

<sup>2)</sup> Depends on the projector setting condition and usage environment.



PrimeSupport

# You've got our support

PrimeSupport

PrimeSupport is our comprehensive aftersales service dedicated to European business customers of Sony Professional products. All our products come with 3 years PrimeSupport as standard, with an option to extend that service up to 5 years in total.

## Our 3 Year After-sales service package comes as standard



EU wide professional "ELITE" Helpdesk available Mon-Fri 9am-6pm



3 years as standard. +1 or 2 years PrimeSupport Elite extensions available including a loan unit during repair. (Up to 4 years or 9,600 hours | Up to 5 years or 12,000 hours)



Faulty projectors are recycled as part of our Road to Zero initiative

## Even greater peace of mind

### Expanded after-sales care options for BRAVIA Projectors



#### PrimeSupport Pro

---

Find your local telephone number to contact our PrimeSupport Helpdesk on our website [pro.sony/support-services/prime-support-europe](https://pro.sony/support-services/prime-support-europe) Monday to Friday 09:00 - 18:00 (Central European Time), excluding local national holidays. Support is available in English, French, Italian, German and Spanish.

Optional PrimeSupport Pro packs can be purchased to add a 2-year extension to the standard 3-year PrimeSupport, and to give long-term assurance of expert support and technical assistance for a total of 5 years from the purchase date.

For full information and pricing details, please get in touch with your Sony team or email [primesupport@sony.com](mailto:primesupport@sony.com)

# SONY

Distributed by

©2025 Sony Corporation. All rights reserved.

Reproduction in whole or in part without written permission is prohibited.

Features, design, and specifications are subject to change without notice.

The values for mass and dimension are approximate.

Visual effects and situation images are simulated.

Regarding picture quality, it is based on evaluation results by Sony.

"Sony", "BRAVIA" and "TRILUMINOS" are trademarks of Sony Corporation.

SXRD is a registered trademark or a trademark of Sony Group Corporation or its affiliates.

IMAX® is a registered trademark of IMAX Corporation in the United States and/or other countries.

All Rights Reserved.

The terms HDMI and HDMI High-Definition Multimedia Interface, and the HDMI Logo are trademarks or registered trademarks of HDMI Licensing LLC in the United States and other countries.

All other trademarks are the property of their respective owners.

Please visit Sony's professional website or contact your Sony representative for specific models available in your region.